

Cap Camarat 9.0 WA SERIE 2



SUMMARY

SPECIFICATIONS

KEY POINTS

EXTERIOR

INTERIOR

ATMOSPHERES

ELECTRONIC PACKS

TECHNICAL DATAS

SPECIFICATIONS

Cap Camarat 9.0 WA SERIE 2

Cap Camarat 9.0 WA Serie 2

Provisional specifications



Longueur hors tout (moteurs relevés) / Overall length (engines up)	9,35 m / 30'8"	Capacité carburant / Fuel capacity	2x 200 L / 2 x 73 USgal
Longueur hors tout avec plateformes / Length overall with platforms	9,08 m / 29'9"	Capacité d'eau douce / Fresh water capacity	100 L / 26 USgal
Longueur hors tout / Length overall	8,38 m / 27'6"	Capacité eau noire / Black water tank	80 L / 21 USgal
Longueur de coque / Hull length	7,96 m / 26'1"	Cabine / Cabin	1
Largeur maxi / Beam	2,98 m / 9'9"	Couchages / Berths	2 / 4
Tirant d'air / air draft	Standard : 2,19 m / 7'2" Full option max : 2,82 m / 9'3"	Salle de bain / Head	1
Tirant d'eau / Draft	Min : 0,66m / 2'2" (hull draft) Max : 1,00 m / 3'3" (engines down)	Designer / Designer	SARRAZIN Design
Angle V de coque / Dead rise	20°	Architecte / Architect	Michael PETERS
Motorisation / Engines	Yamaha 2x200 CV / HP Yamaha 2x250 CV / HP	Catégorie CE / CE certification	B 6 / C 10

DESIGN AND HIGH PERFORMANCE TO EXPERIENCE PURE THRILLS

Boasting a V-shaped hull by Michael Peters and twin engines, for up to 2 x 250 HP, the Cap Camarat 9.0 WA Series 2 will delight thrill-seekers and fans of express crossings, the wind in their hair, with top speeds of over 40 knots. With elongated lines, a T-top, a protective glass windscreen, and large windows in the hull... this boat, inspired by the Cap Camarat 10.5 WA and 12.5 WA, boasts an elegant, distinguished, and contemporary style, yet one that is also synonymous with safety and fun for the whole family.

RELAXATION AND A LAID-BACK LIFESTYLE ON BOARD

Spirited while cruising, the Cap Camarat 9.0 WA Series 2 is dedicated to relaxation and a laid-back lifestyle when at anchor. The foldaway backrest of the aft bench seat transforms the aft cockpit into a vast sundeck in just seconds. The side terrace extends the cockpit and provides secure, easy access to the sea, for swimming in complete safety.

A HEIGHTENED EXPERIENCE

The forward deck features a true additional cockpit, for relaxing and enjoying a drink while seated in a sun lounger, or a module can be added to form a sundeck. At the end of the day, an exterior galley, comprised of a grill and refrigerator incorporated in an optional leaning post, enables you to prepare a nice meal, facing the sunset, before spending a night at sea in two superb separate cabins, each cosy and well-lit, with double berths.



The hull of the **Cap Camarat 9.0 WA Series 2** is **without step**.
This hull without step allows :

- Engines choice from 2x 200 HP to 2x 250 HP
- Rapid acceleration and lift-off at low speed

KEY POINTS

Cap Camarat 9.0 WA SERIE 2



T-TOP (option)

Michael Peters hull, no step
INFUJECTION (patented technology)

Bow thruster (option)

PROCESS

HIGH-END INFUJECTION TECHNOLOGY (Jeanneau patent)

Mix of 2 technologies : infusion and injection

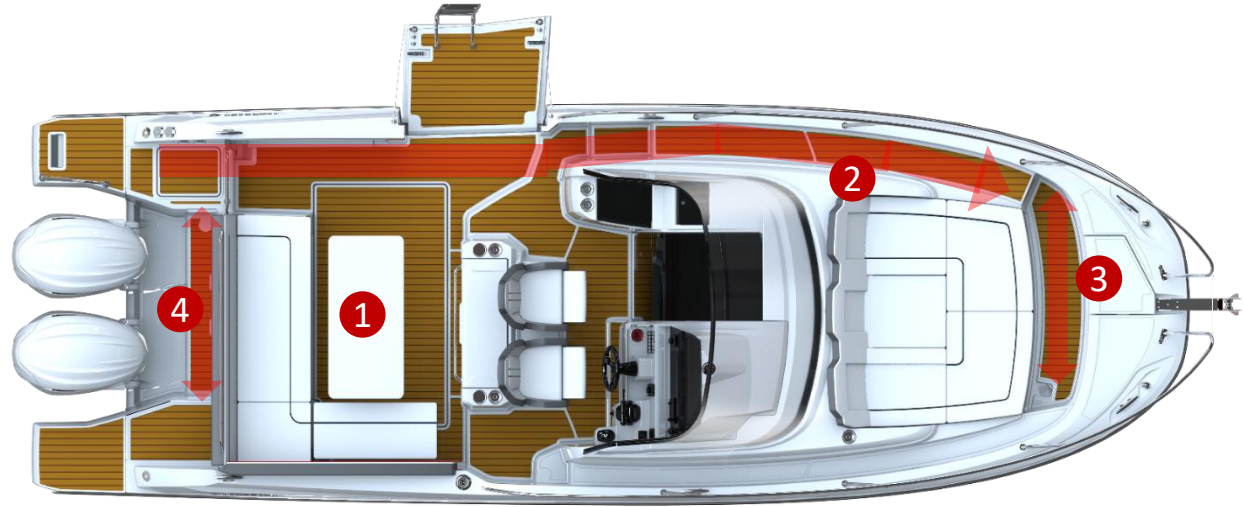
ADVANTAGES :

- Stronger and stiffer : **Stringers and hull are one single part**
- Lighter : More fiberglass and less resin
- White gelcoat on hull bottoms
- **Reduction of environmental impact**



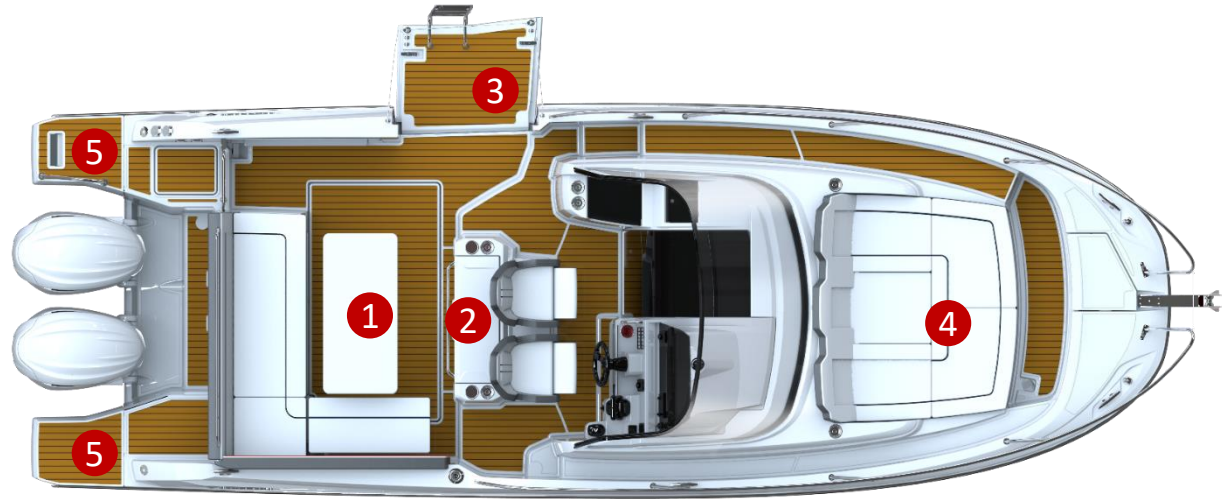
Perfect circulation on board

- ① Aft cockpit
- ② Highly secure deep sidedeck
- ③ Front cockpit
- ④ Easy to walk in front of the engines



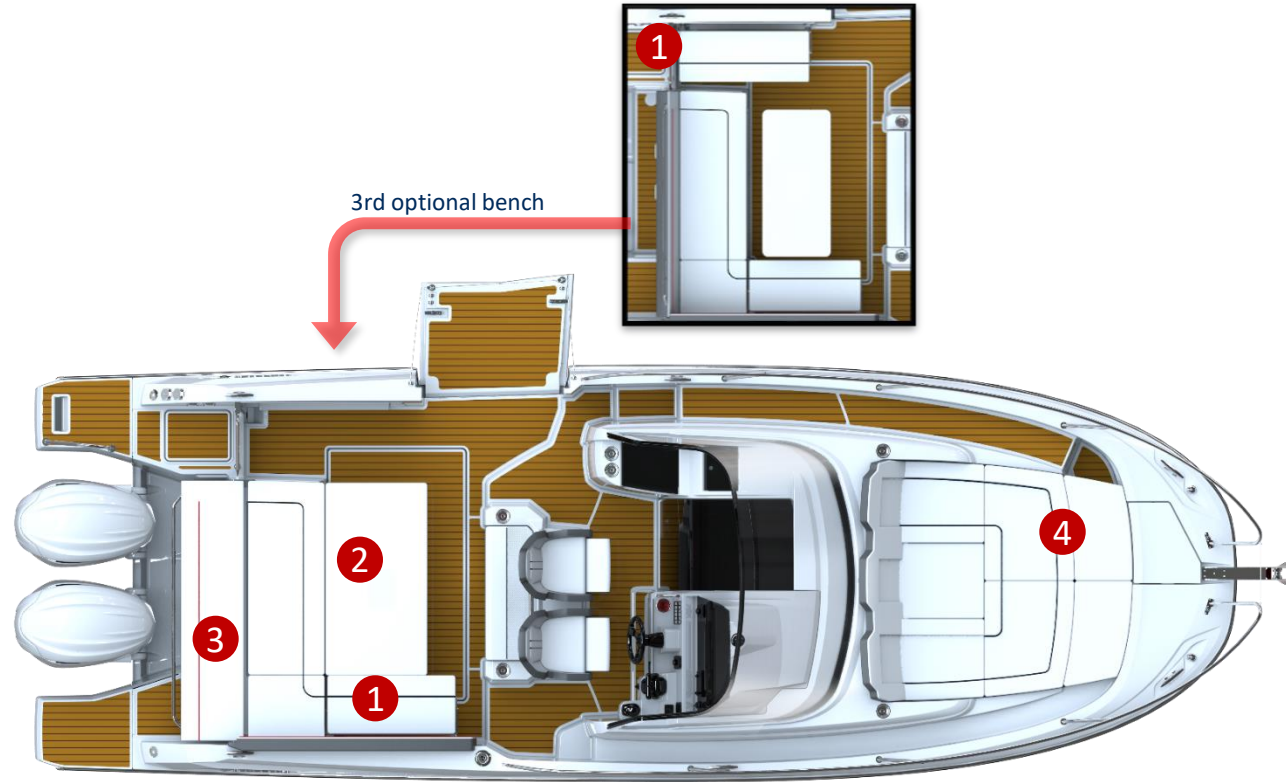
Two large living areas

- ① Modular aft cockpit
- ② Cockpit galley
- ③ Lateral terrace (manual)
- ④ Large front cockpit
- ⑤ Swimming platforms



Two large living areas

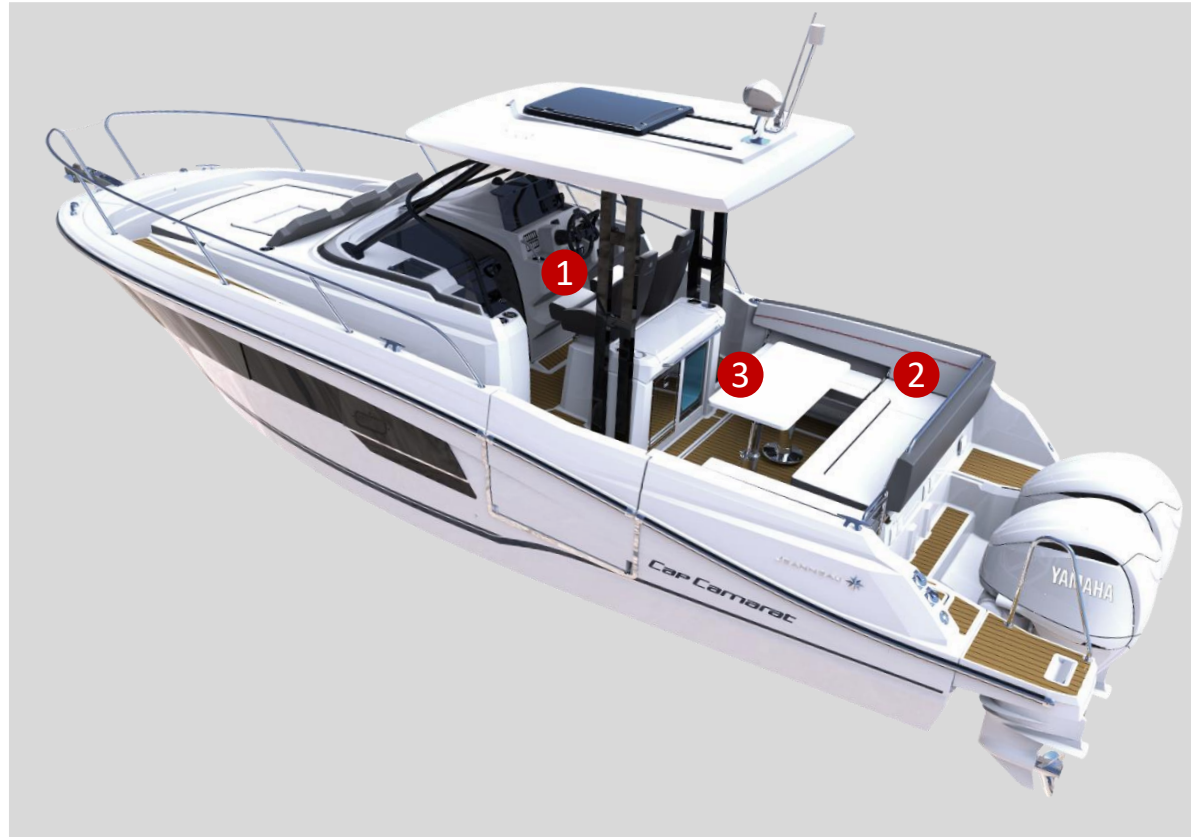
- 1 Folding benches (L- or U-shape saloon)
- 2 Table convertible into a sunbed (option)
- 3 Foldable backrest into a sunbed (option)
- 4 XXL front sunpad (option)



Lateral terrace extending the cockpit towards the sea : safe and easy access for swimming

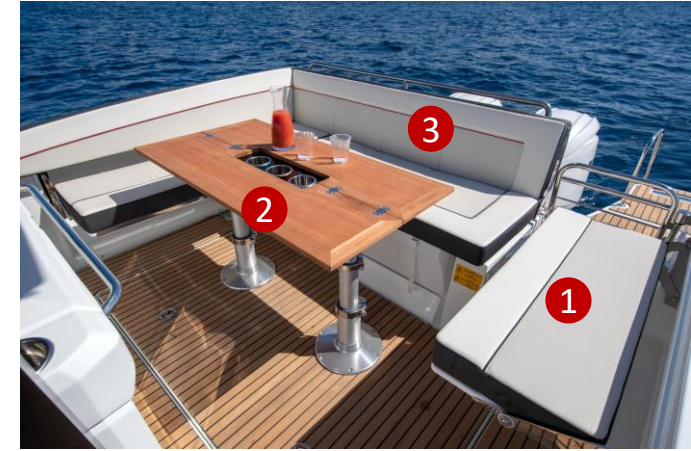


- ① **3 pilot seats + leaning post**
- ② **Standard :** L-shape cockpit with folding starboard bench
Option : U-shape cockpit with folding portside bench
- ③ **Options :**
Cockpit table with removable legs (more space for nautical activities)
or
Cockpit table on telescopic legs convertible into a **wide sunbed**





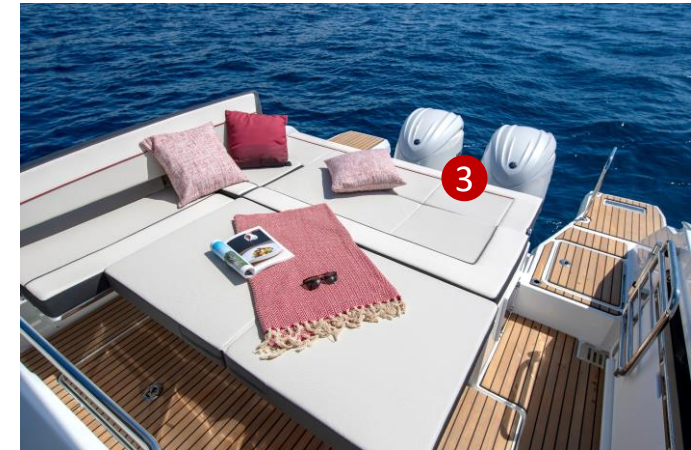
1 Foldable benches
(L- or U-shape saloon)



2 Table convertible into a
sunbed (option)



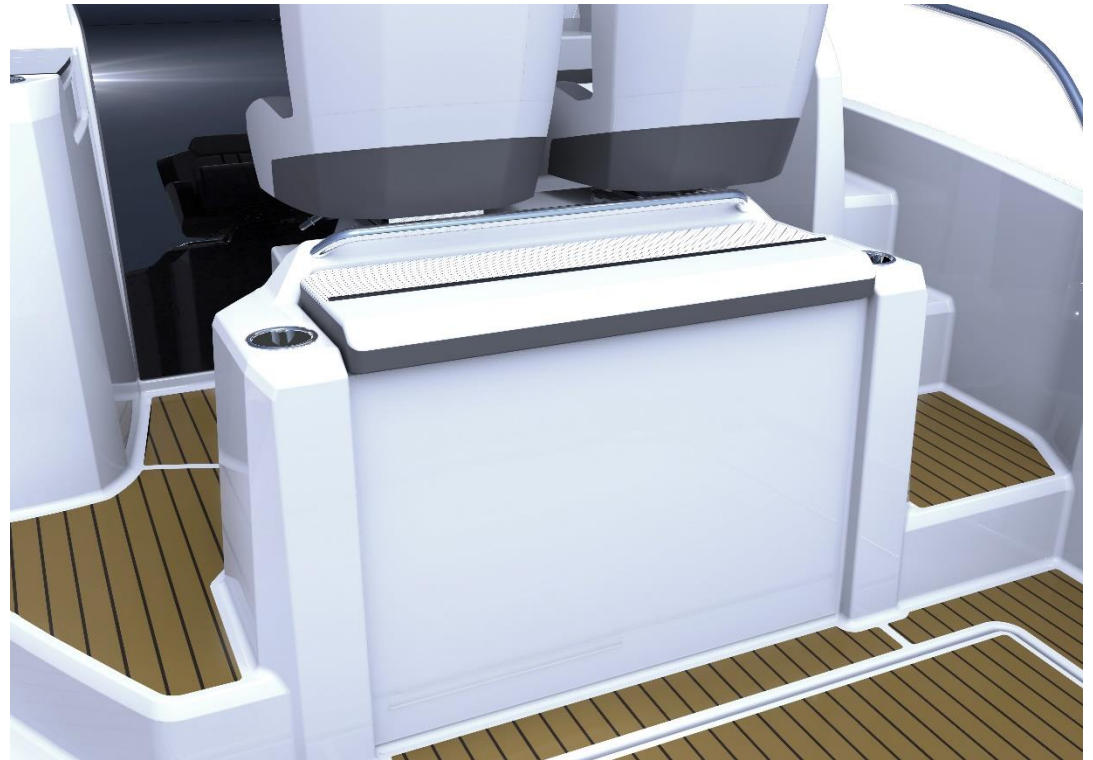
3 Foldable backrest into a
sunbed



LEANING POST

Standard leaning post with cushion

Standard sink on portside, close to the co-pilot seat



LEANING POST

Standard leaning post with cushion

Option : Fridge + storage

Option : Livewell in lieu of the storage



LEANING POST

Optional exterior galley

Requires the « fridge + storage » option.

Storage can be replaced by a livewell.

Option : gas stove, gas plancha or electric grill



HELM STATION



Central helm station with 2 bolster seats

Dashboard with space for 12" Garmin screen

FRONT COCKPIT

Large front sunpad.
Optional filler cushion to
have an XXL sunpad.

Optional sunshade on
poles.



FLOOR CARPETS OPTION



INFINITY
— LUXURY WOVEN VINYL —

Option : *Removable outdoor carpets
(on snaps)*

SUN AWNINGS

Options :

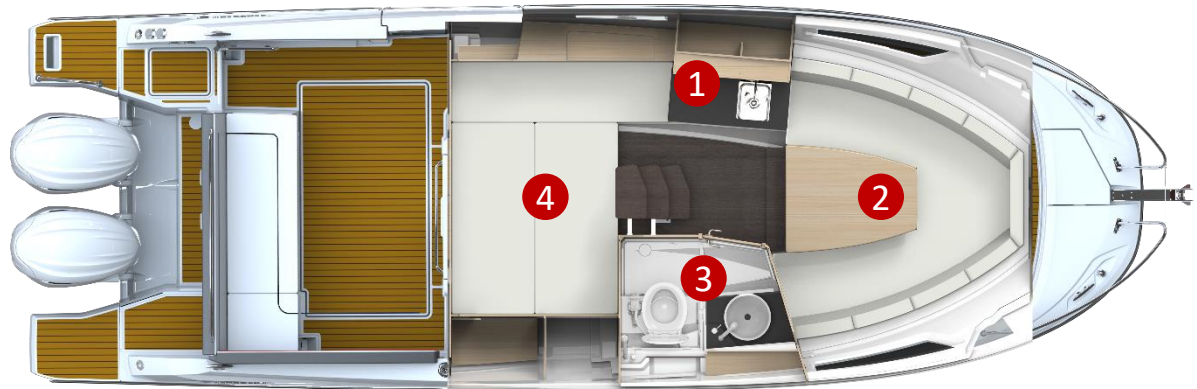
- 1** Front cockpit sunshade, compatible with bimini or T-top

- 2** Aft cockpit sunshade for T-top



ROOMY INTERIOR LAYOUT

- 1 Interior galley
- 2 Saloon for 6 people, convertible into a double berth
- 3 Bathroom with separate shower
- 4 Aft double berth



INTERIOR

Cap Camarat 9.0 WA SERIE 2





INTERIOR

Cap Camarat 9.0 WA SERIE 2

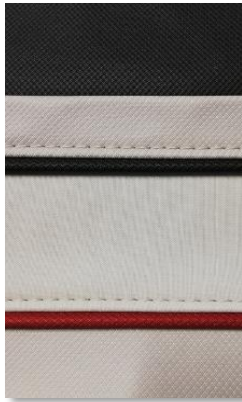


- ① Indirect LED light
- ② Washbasin on the worktop
- ③ Very good ventilation (porthole)
- ④ Shower screen and toilet seat
- ⑤ Electric fresh water WC
(in the comfort pack, replacing the standard marine WC)



EXTERIOR

SELLERIE
UPHOLSTERY
STANDARD



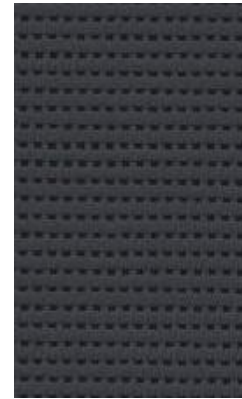
SILVERTEX ICE
DIAMANTE CARBON

CAPOTAGES
AWNINGS



SUNBRELLA
GRAPHITE

TOILES D'OMBRAGE
SUN AWNINGS



Sunworker Charcoal

INTERIOR

Tissu intérieur
Interior Fabric

Tissu intérieur
Interior Fabric

Menuiseries
Wood

STANDARD



**PVC MARLIN PURE
WHITE**

JUMBO PURE

**CHÊNE SABLE /
PLANCHER CHÊNE BRUN**

ELECTRONIC PACK

ECHOMAP UHD 92sv

Chartplotter/Sonar combo with 9" keyed-assist touchscreen display.



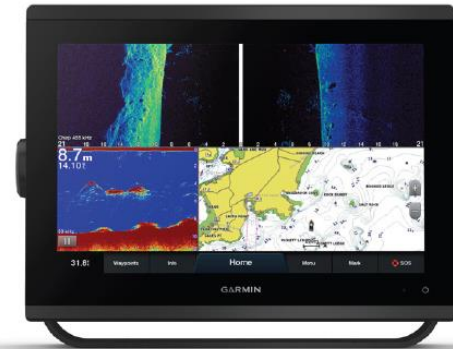
Garmin GT15M-1H
Mid-Band CHIRP Traditional
Depth and Temperature

UPGRADE

1 GPSMAP 1223xsv (12") INSTEAD OF AN ECHOMAP UHD 92sv (9")

GPSMAP 1223xsv

MFD with multitouch 12" screen



OPTION

FIXED-MOUNT VHF RADIO

(AVAILABLE IN BOTH US/CANADA & INTERNATIONAL STANDARDS)

VHF 215i AIS

VHF radio with integrated AIS receiver

(1W / 25W)



Engine shaft

Modèle	Motorisation	Pied d'embase / Shaft length	Longueur en mm / Length in mm	Longueur en pouces / Length in inches	YAMAHA	MERCURY	HONDA	SUZUKI
CAP CAMARAT 9.0 CC / WA S2	bi-moteur / twin	EXTRA LONG	635	25"	TX	XL	X	X

CE Certification

MODELES MODELS	ATTESTATION N° / CERTIFICATE N°	LONGUEUR COQUE* / HULL LENGTH*	LARGEUR COQUE* / HULL BEAM*	CHARGE MAX / MAX LOAD	CATEGORIE / CATEGORY	PERSONNES / PERSONS	PUISSANCE / MAXI POWER		MASSE MAXI MOTEUR / MAX ENGINE WEIGHT
		Mètres / Meters	Mètres / Meters	Kg			Kw	CV / HP	Kg
CAP CAMARAT									
Cap Camarat 9.0 CC	R CDB 0000087	7,96	2,94	2 460 - 2 570	B - C	8 - 11	368	2 x 250	640
Cap Camarat 9.0 WA Serie 2	En cours / In progress			2 301 - 2 586	B - C	6 - 10			

Pour les homologations en cours, toutes les informations doivent être considérées comme provisoires.

Les catégories et nombre de personnes indiqués correspondent à la demande faite par le chantier, pas à une confirmation.

When the EC regulation is in progress, please consider all information as provisional.

The categories and number of persons written are requested by the Jeanneau Yard, not confirmed.

* Indiqué sur la DEC (Déclaration Ecrite de Conformité)

* *Written on the WSC (Written Statement of Compliance)*

ND: Non Disponible / No Data

Mooring and anchoring kits

Bateaux / Boats	MOUILLAGE / ANCHORING				AMARRE / MOORING		PARE-BATTAGES / FENDERS				
	Code / Ref	Ancre / Anchor	Chaîne / Chain		Câblot / Line		Code / Ref	Désignation / Détail			
Cap Camarat 9.0 CC / WA S2	162304	14 kg	Plate / Flat	8 mm	23 m	35 m	14 mm	043143	4 x D12 L8000	189031	4 x 645 x D.150

Cap Camarat *9.0 WA* SERIE 2

This document was updated in October 2023.
It may contain illustrations or texts representing or
referring to optional equipment.
If changes appear on our 2024 models, with regard to
equipment or options referred to in this document,
only the current Jeanneau rate will apply.

