

MERRY FISHER 1295 FLY



SUMMARY

SPECIFICATIONS

KEY POINTS

EXTERIOR

INTERIOR

ATMOSPHERE

ELECTRONIC PACKS

TECHNICAL INFORMATION

SPECIFICATIONS

MERRY FISHER 1295 FLY

Merry Fisher 1295 FLY



LOA	12,56 m / 41'2"	Black water capacity	120 L / 32 US gal
Hull length	11,92 m / 39'1"	Fridge capacity	Max option : 164 L / Min standard : 130 L Max option : 43,3 US gal / Min standard : 34,34 Us gal
Beam	3,80 m / 12'5"	Cabins	3
Air draft (w/wo navigation light)	min : 4,46 m / max : 5,08 m min : 14'77" / max : 16'7"	Berths	6 / 8
Hull draft	0,77 m / 2'6"	Heads	2
Max draft	1,13 m / 3'8"	Outboard engines max	3 x 300 CV / HP (3 x 221 Kw) + Joystick
Displacement	9 413 kg / 20 752 lbs	Designer & Architect	Centkowski & Denert Design / Jeanneau Design
Fuel capacity	1200 L / 317 US gal	CE certification	B 10 / C 12
Fresh water capacity	400 L / 105,7 US gal		

MERRY FISHER 1295 Fly : THE JOY OF CRUISING

This new Merry Fisher 1295 Fly features multiple living spaces especially designed for relaxation with family and friends. Plenty of time for swimming and moments with your feet dangling in the water from the aft cockpit, with the electrically controlled starboard-side terrace. Port side, a large side door facilitates the access for everyone on board.

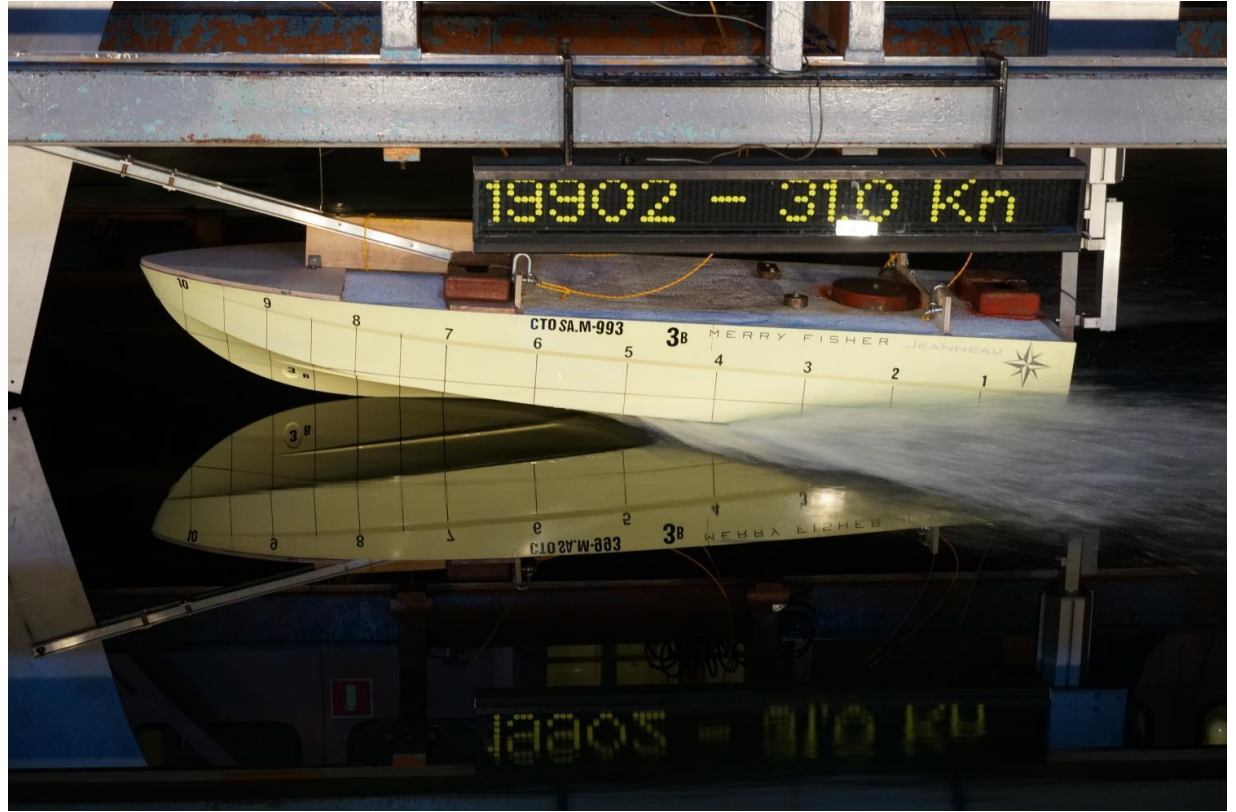
With large, bright windows and a panoramic view over the water, life is sweet aboard this flagship, enhanced by a refined, contemporary selection of materials. Take your place at the helm, and take advantage of the very latest technologies, found aboard the largest boats, for easy handling. The starboard-side door will allow easy access and facilitate maneuvers, for cruising with complete peace of mind. Cast off, and take up residence in one of three comfortable cabins, for a peaceful rest on the water at each stop along your cruise !

EXTERIOR

MERRY FISHER 1295 FLY



- New Merry Fisher identity :**
- New shape of hull windows
 - Flybridge outboard: a real motoryacht !

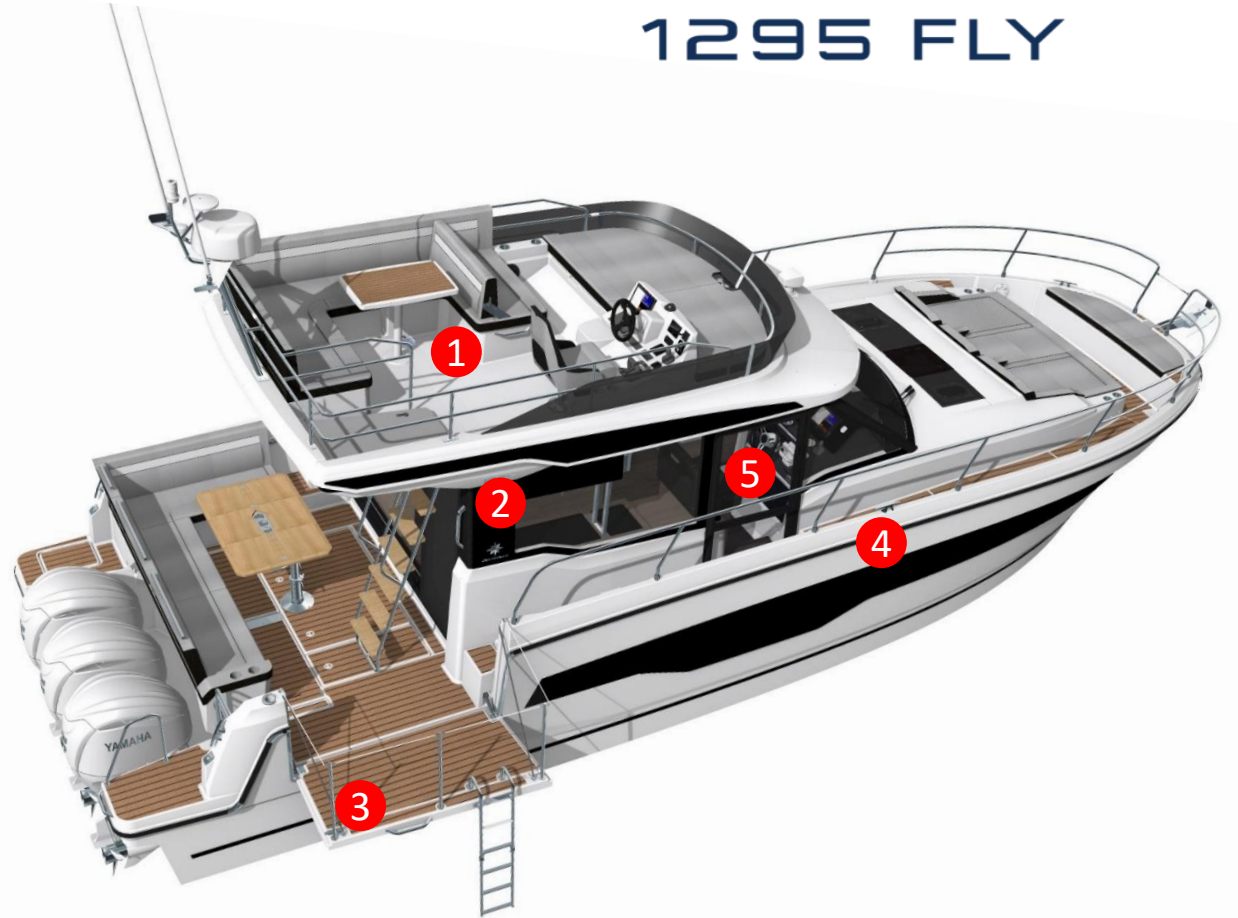


**NEW HULL OPTIMIZED FOR OUTBOARDS AND FLAT CRUISING AT INTERMEDIATE SPEEDS,
IN THE SAME SPIRIT AS THE HULL DEVELOPED FOR THE MERRY FISHER 1095.**

EXTERIOR

MERRY FISHER 1295 FLY

- 1 Large flybridge
- 2 Large glass windows surfaces : a lot of brightness
- 3 Electric terrace (standard)
- 4 Large hull windows (Merry Fisher identity)
- 5 XXL lateral door



EXTERIOR

MERRY FISHER 1295 FLY

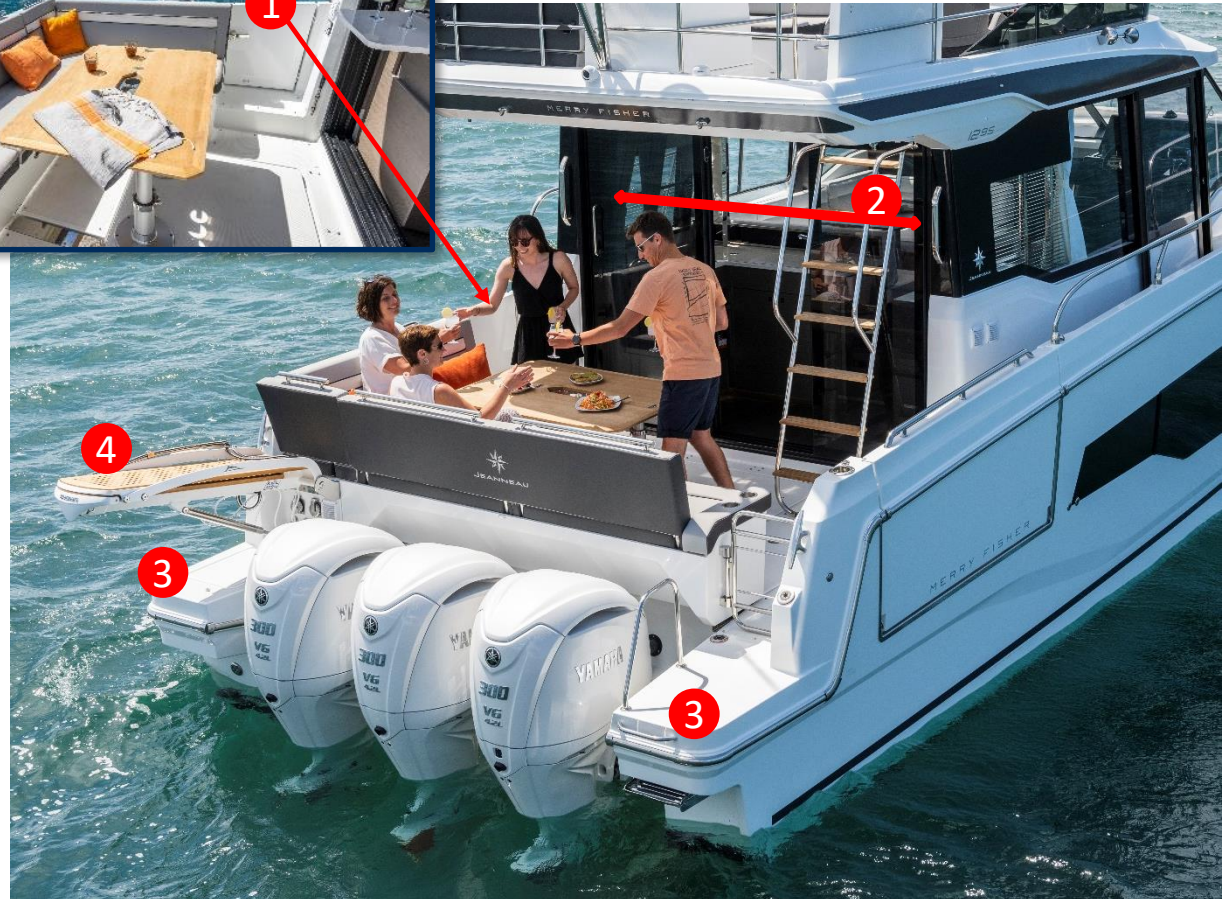


1 Side boarding door (on portside)

2 3-leaf bay-window opening to port or starboard

3 Swimming platforms (standard)

4 Hydraulic gangway (optional)



SAFE MANEUVERS & ACCESS ON BOARD



Portside boarding door



Starboard lateral door

1 Large aft cockpit

2 Large front cockpit/saloon and sunpad

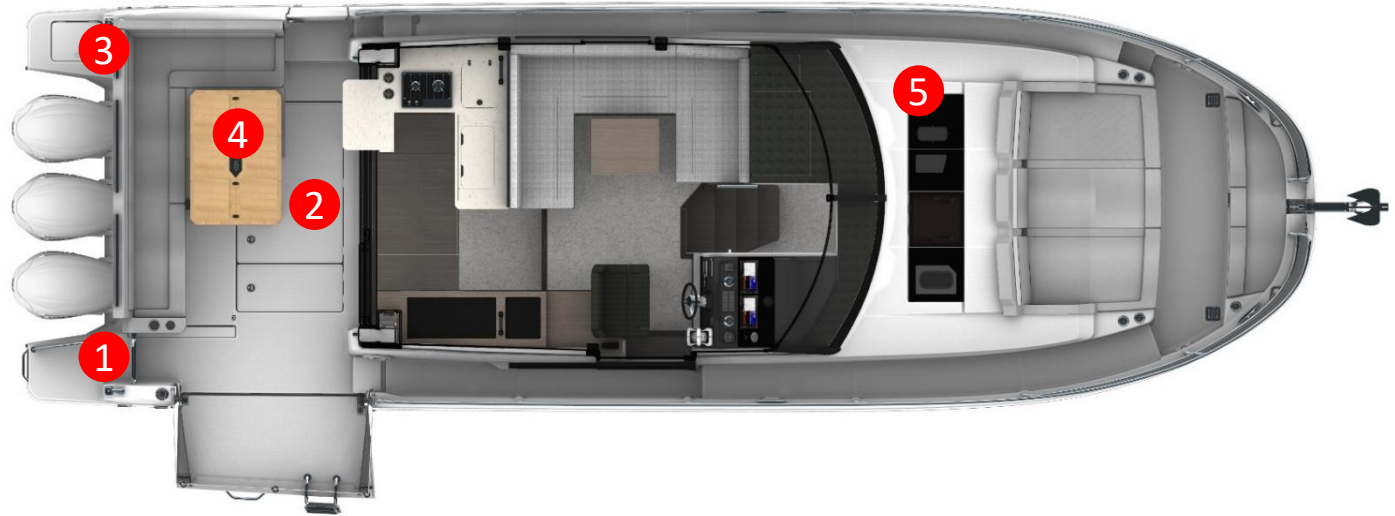
→ Excellent circulation on board:
Main sidedeck on starboard
Secondary sidedeck on portside



EXTERIOR

MERRY FISHER 1295 FLY

- 1 Main gate
- 2 Storage locker
- 3 Secondary gate
- 4 Aft cockpit table
- 5 Skylight



EXTERIOR

MERRY FISHER 1295 FLY

L-shaped cockpit with sliding rear bench, allows :

- Lift up the engines
- Keep the seats
- Easy access to the engines

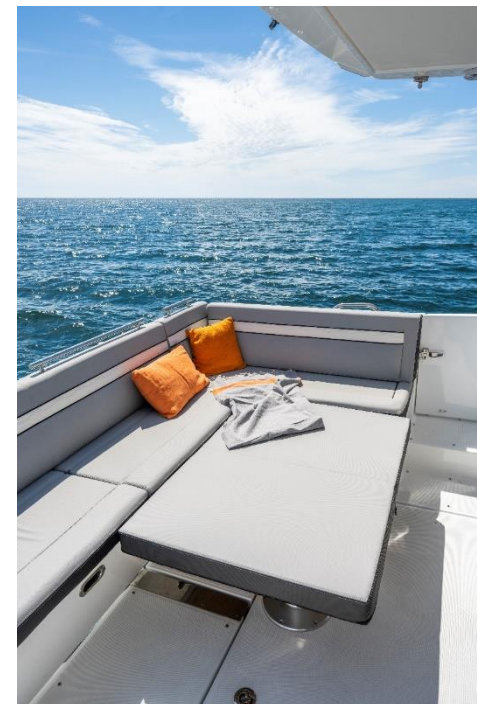
Secondary gate



Gate :
Easy access

EXTERIOR

MERRY FISHER 1295 FLY



Option: Wood cockpit table - convertible into sunbed

EXTERIOR

MERRY FISHER 1295 FLY

Front cockpit in « vis-à-vis »



Front cockpit in « vis-à-vis »

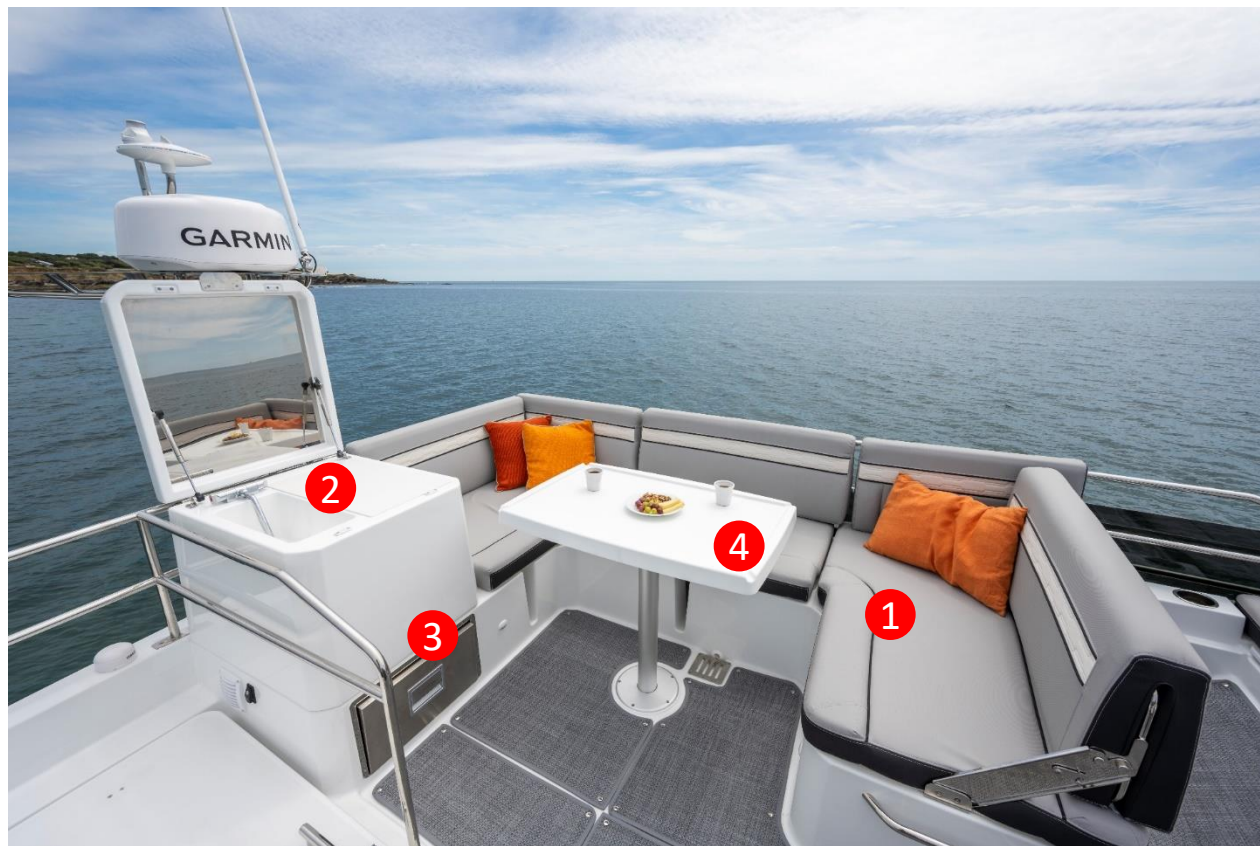


Front sunbed



XXL front sunbed with filler cushions

- 1 U-shaped saloon
- 2 Flybridge galley option (sink + grill):
in lieu of the standard seat
- 3 20L drawer fridge (optional)
- 4 Flybridge table (optional)



- 1 U-shaped saloon
- 2 Copilot bench with folding backrest, convertible into chaise-longue
- 3 Front sunbed cushions (optional)



FLYBRIDGE

MERRY FISHER
1295 FLY





Cockpit with full instrumentation for engine and accessories
(same as inside instrumentation)

INTERIOR

MERRY FISHER 1295 FLY

Very large windows : a lot of brightness



INTERIOR

MERRY FISHER 1295 FLY

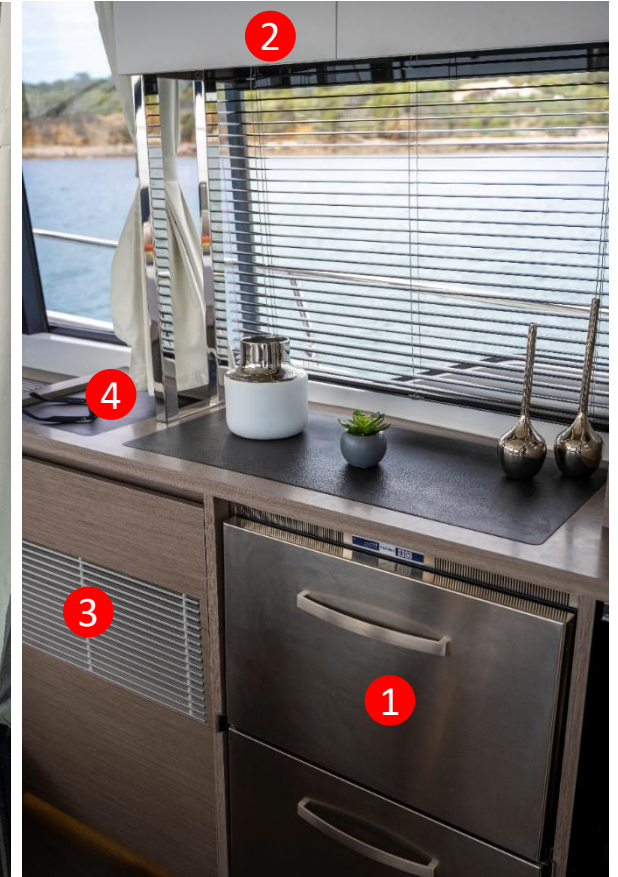
GALLEY FACING THE COCKPIT / FACING THE SALOON

- ① Lacquered storage
- ② Folding bar
- ③ Microwave oven (optional)
- ④ Ceramic hob (option to replace gas)
- ⑤ Sink



GALLEY FACING THE COCKPIT / FACING THE SALOON

- ① 2-drawer fridge 130L
or optional:
2-drawer fridge/freezer 144L
- ② Lacquered storage
- ③ Air conditioning
(optional in lieu of standard storage)
- ④ Pocket folder



INTERIOR

MERRY FISHER
1295 FLY

GALLEY FACING THE COCKPIT / FACING THE SALOON



Large storage compartment under the floor of the galley

INTERIOR

VERY COMFORTABLE SALOON

- 1 Very large U-shaped saloon
- 2 Rotating pilot seat



MERRY FISHER
1295 FLY

INTERIOR

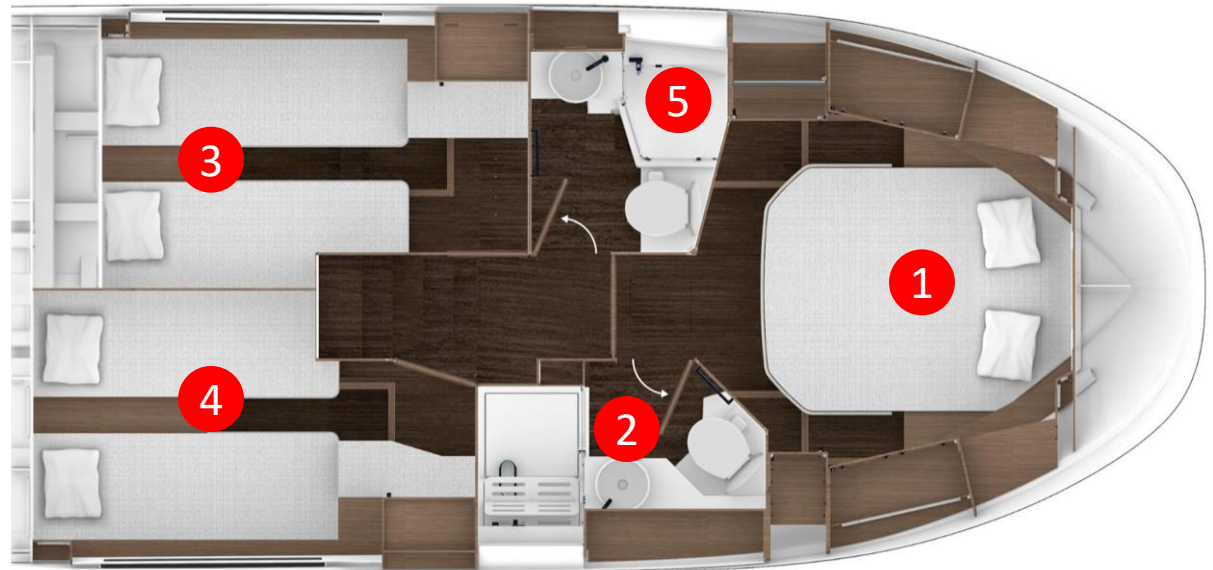
VERY COMFORTABLE SALOON

- 1 **Option** : Saloon convertible into a bed
- 2 **Option** : Complete TV prefrit (Saloon + front cabin)



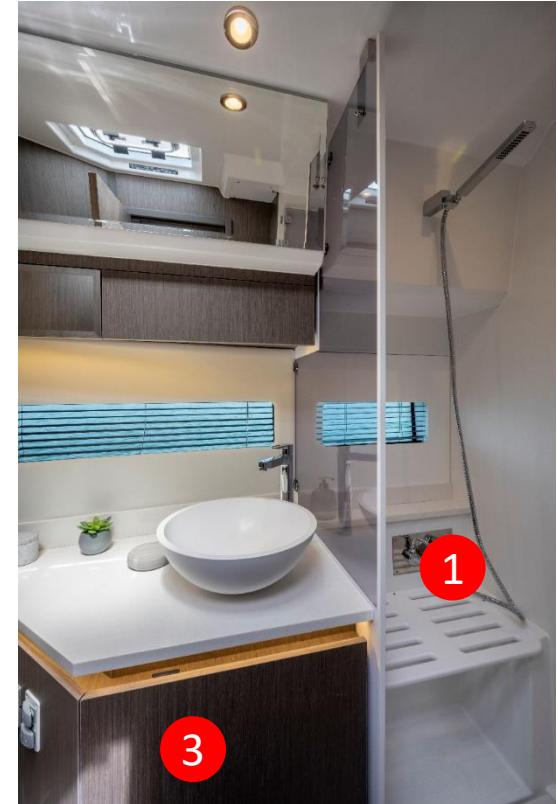
MERRY FISHER
1295 FLY

- 1 Spacious owner's cabin with private access to the head
- 2 Large en-suite head with shower and separate toilet
- 3 2nd separate cabin with 2 single beds
- 4 3rd separate cabin with 2 single beds
- 5 2nd head with shower and separate toilet



Owner's head

- 1 Separate shower
- 2 Separate toilet
- 3 Storage



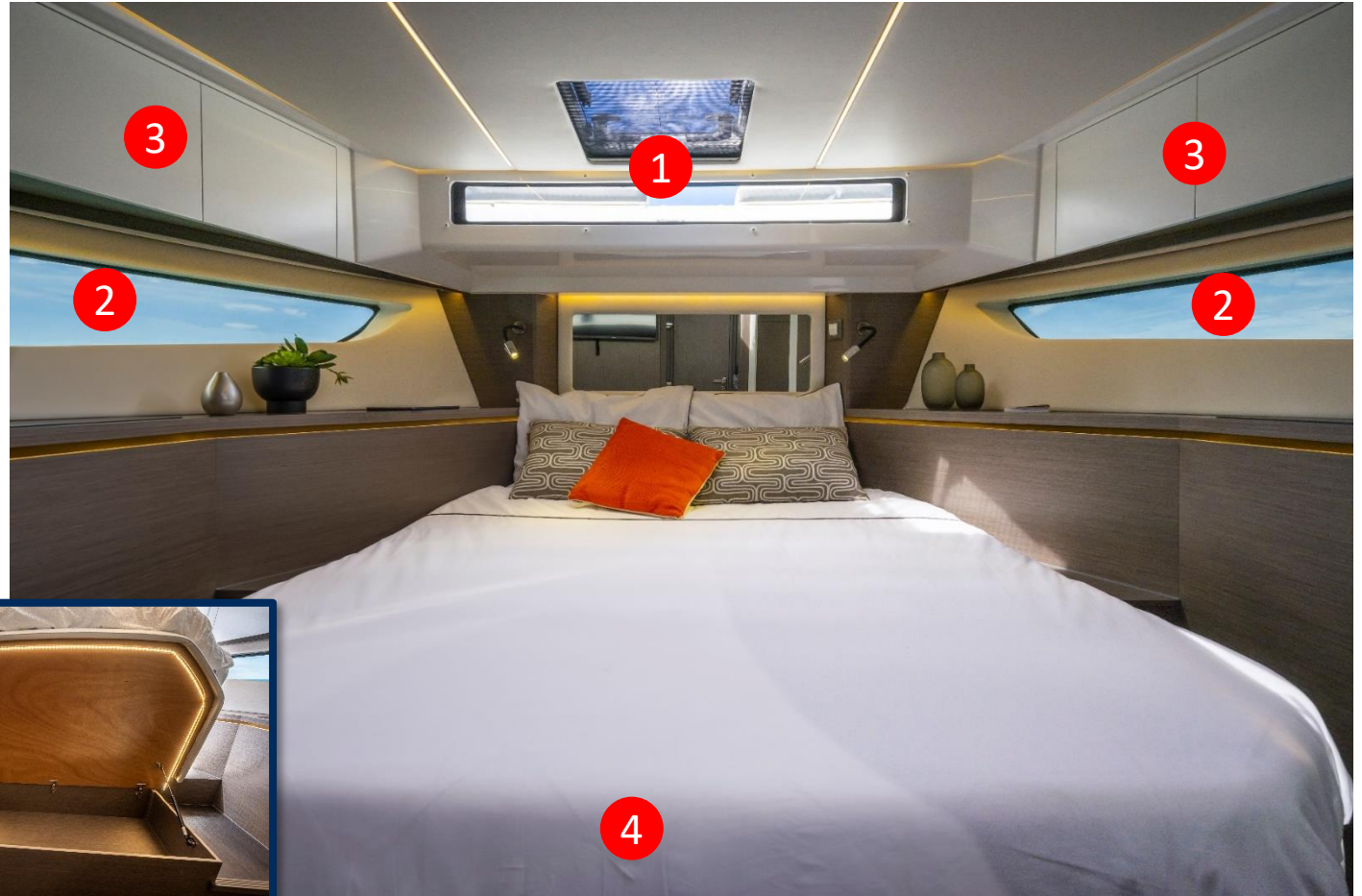
2nd guest head

- 1 Separate shower
- 2 Separate WC
- 3 Storage



LARGE OWNER'S CABIN

- 1 Opening deck panel and Skylight
- 2 Large hull windows
- 3 Lacquered storage
- 4 Large storage under the bed



LARGE OWNER'S CABIN

- 1 Wardrobes
- 2 Air conditioning (optional in lieu of standard storage)



2nd GUEST CABIN

- 1 Hull window with opening porthole
- 2 Single beds
- 3 Large wardrobe
- 4 Seating



3rd GUEST CABIN

- 1 Hull window with opening porthole
- 2 Single beds
- 3 Large wardrobe
- 4 Seating



ENCLOSURE AND SUN AWNINGS OPTIONS

MERRY FISHER
1295 FLY



Flybridge bimini



Front cockpit sunshade on poles

ENCLOSURE AND SUN AWNINGS OPTIONS

MERRY FISHER
1295 FLY



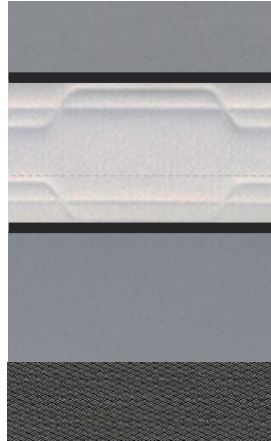
Cockpit sun awning

Aft cockpit enclosure

EXTERIOR

UPHOLSTERY

STANDARD



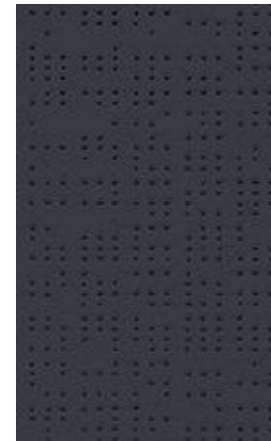
DIAMANTE MOONLIGHT
SPRADLING HITCH ICEBERG
DIAMANTE CARBON

AWNINGS



SUNBRELLA
GRAPHITE

SUNSHADE



SOLTIS 92

INTERIOR

FABRIC INTERIOR

STANDARD



JUMBO PURE

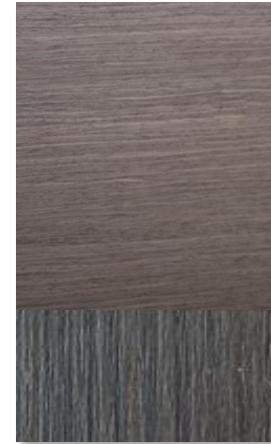
FABRIC INTERIOR

OPTION



DOLCE ARTESIAN

WOOD



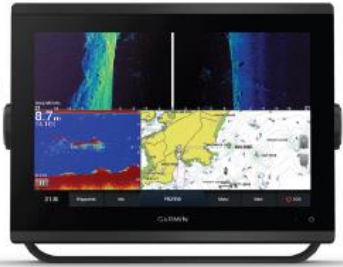
NOYER GRISÉ /
PLANCHER FORTEZZA

ELECTRONIC PACK

FLY

GPSMAP 1223xsv

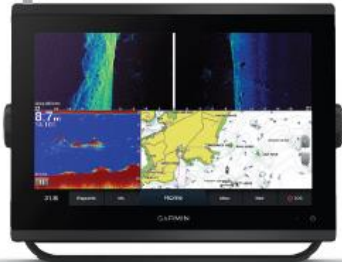
Chartplotter/Sonar combo with 12" touchscreen display.



WHEEL HOUSE

GPSMAP 1223xsv

Chartplotter/Sonar combo with 12" touchscreen display.

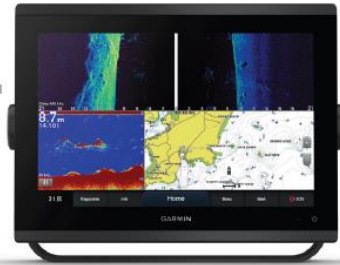


Garmin GT15M-IH
Mid-Band CHIRP Traditional
Depth and Temperature

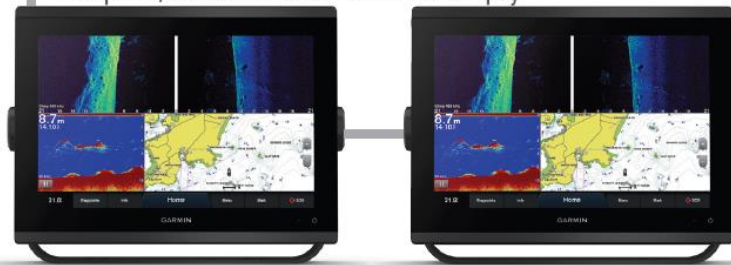


ELECTRONIC PACK UPGRADED

FLY
GPSMAP 1223xsv
Chartplotter/Sonar combo with 12" touchscreen display.



WHEEL HOUSE
GPSMAP 1223xsv
Chartplotter/Sonar combo with 12" touchscreen display.



Garmin GT15M-IH
Mid-Band CHIRP Traditional
Depth and Temperature



OPTION
BLACK-BOX VHF RADIO
(AVAILABLE IN BOTH US/CANADA & INTERNATIONAL STANDARDS)

VHF 315i
Black-box VHF radio (1W / 25W)
with GHS11i handset microphone



OPTION
REAR CAMERA

GC 12
Monitoring camera



OPTION
SOLID-STATE DOME RADAR WITH 50W OF TRANSMIT POWER


Fantom 18x
with MotionScope technology



OPTION
OPEN ARRAY RADAR

GMR Fantom 54
4' antenna, 50 W solid-state, open array
radar with MotionScope Technology



Merry Fisher 1295 Fly							
		Yamaha 300 USB2 SBW					
		<u>Caractéristique / Specifications:</u>					
		3 moteurs hors Bord / Out Board engines: 300SBW					
		Hélice / Propeller: SALTWATER T15					
Capacité de carburant						1200 l	
Déplacement total du bateau / Total displacement of boat tested:						12423 Kg	
Regime en tours par minute au tableau de bord / RPM on instrument panel	Vitesse en nœuds moyenne au radar / Average speed on the radar in knots	Consommation moteur en litres par heure / consumption engine in liter an hour	Rendement / Efficiency (L/NM = Liter per Nautical Mile)	Consommation totale en USGal / heure Total consumption in USGal/h	Rendement / Efficiency (USGal/NM)	Autonomie en NM (avec réserve 20%) / Range in NM (with 20% fuel supply)	Trim
500	2,6 Nds	7,1 l/h	2,78L/NM	1,9 USGal/h	,74 USGal/NM	345 NM	
1000	4,3 Nds	15,0 l/h	3,53L/NM	4,0 USGal/h	,93 USGal/NM	272 NM	
1500	6,5 Nds	23,6 l/h	3,63L/NM	6,2 USGal/h	,96 USGal/NM	264 NM	
2000	8,2 Nds	38,7 l/h	4,72L/NM	10,2 USGal/h	1,25 USGal/NM	203 NM	
2500	9,3 Nds	56,3 l/h	6,05L/NM	14,9 USGal/h	1,60 USGal/NM	159 NM	
3000	10,2 Nds	70,1 l/h	6,91L/NM	18,5 USGal/h	1,82 USGal/NM	139 NM	
3500	11,5 Nds	97,5 l/h	8,48L/NM	25,8 USGal/h	2,24 USGal/NM	113 NM	
4000	15,8 Nds	133,5 l/h	8,45L/NM	35,3 USGal/h	2,23 USGal/NM	114 NM	
4500	25,0 Nds	171,8 l/h	6,87L/NM	45,4 USGal/h	1,82 USGal/NM	140 NM	
5000	29,9 Nds	212,0 l/h	7,09L/NM	56,0 USGal/h	1,87 USGal/NM	135 NM	
5500	33,4 Nds	281,5 l/h	8,43L/NM	74,4 USGal/h	2,23 USGal/NM	114 NM	25%
5900	35,6 Nds	295,0 l/h	8,30L/NM	77,9 USGal/h	2,19 USGal/NM	116 NM	50%
Conditions optimales théoriques et purement indicatives des essais: /Optimal theoretical conditions, purely indicative for trials :							
Coque neuve, vent 15nds, mer légèrement agitée, antifouling / new hull, wind 12 knots, Slightly rough sea, antifouling							
06/07/2022							

Engines shaft length

Modèle	Motorisation	Moteur / Engine	Pied d'embase / Shaft length	Longueur en mm / Length in mm	Longueur en pouces / Length in inches	YAMAHA	MERCURY	SUZUKI
MERRY FISHER 1295 Fly	tri-moteur / triple	Babord / Port side	EXTRA LONG	635	25"	TX	XL	X
		Central / Center	ULTRA LONG	762	30"	TU	XXL	XX
		Tribord / Starboard	EXTRA LONG	635	25"	TX	XL	X

Anchoring & mooring

Bateaux / Boats	MOUILLAGE / ANCHORING				AMARRE / MOORING		PARE-BATTAGES / FENDERS				
	Code / Ref	Ancre / Anchor		Chaîne / Chain		Câblot / Line	Code / Ref	Désignation / Détail	Code / Ref	Désignation / Détail	
Merry Fisher 1295 Fly	162305	16 kg	Plate / Flat	10 mm	28m	40m	18mm	043145	4 x D16 L12000	189033	6 x 700 x D.250

CE certification

MODELES MODELS	ATTESTATION N° / CERTIFICATE N°	LONGUEUR COQUE* / HULL LENGTH*	LARGEUR COQUE* / HULL BEAM*	CHARGE MAX / MAX LOAD	CATEGORIE / CATEGORY	PERSONNES / PERSONS	PUISSANCE / MAXI POWER		MASSE MAXI MOTEUR / MAX ENGINE WEIGHT
		Mètres / Meters	Mètres / Meters				Kw	CV / HP	Kg
Merry Fisher 1095 Fly	En cours / In progress	11,92	3,78	4214	B - C	10 - 12	2 x 220	3 x 220	3 x 990

Air draft / Bridge clearance (in millimeters)



Batteries

Information on batteries for outboard models Information sur les batteries des modèles hors-bord

Reminder: since 2016 season, batteries are NO MORE delivered with outboard boats (engine batterie(s), fridge battery, bow thruster battery). Dealers have to order batteries by themself and to add their prices in boat quotation.

Except for batteries, all other components (wiring, connectors, ...) are still delivered according to current rules, i.e in standard, in pre-riggings or in option. Hereunder you will find infos and specifications of the recommended batteries.

Rappel: depuis la saison 2016, les batteries NE SONT PLUS LIVREES avec les bateaux hors-bord (batterie(s) moteur, batterie pour frigo, batterie de propulseur). Les concessionnaires doivent commander eux-mêmes les batteries et inclure leur prix dans les devis clients.

En dehors des batteries, les autres composants (câblage, connecteurs, ...) continuent d'être livrés selon les inventaires actuels c'est-à-dire en standard, dans les pré-riggings ou en option selon les cas. Ci-dessous sont indiquées les caractéristiques des batteries recommandées.

	MF605 Série 2	MF695 Série 2	MF695 Sport Série 2	MF795 Série 2	MF795 Sport Série 2	MF895	MF 895 Sport	MF1095 MF1095 Fly	MF 1295 Fly
Engine 1 / Moteur 1	Type 2	Type 2	Type 2	Type 2	Type 2	Type 3	Type 3	Type 2	Type 6
Engine 3 / Moteur 3									Type 6
Engine 2 / Moteur 2	-	-	-	-	-	Type 3	Type 3	Type 2	Type 6
Fridge / Réfrigérateur / Service	Type 2	Type 2	Type 2	Type 2	Type 2	Type 3	Type 3	Type 2 Type 2 (qty = 2 batteries)	Type 6 Type 6 Type 6 (qty = 3 batteries)
Genset option / Option générateur	-	-	-	-	-	Type 4	Type 4	Type 4	Type 4
Bow thruster option / Option propulseur	-	Type 4	Type 4	Type 4	Type 4	Type 4	Type 4	Type 4 (qty = 2 batteries)	Type 4 (qty = 2 batteries)
Seakeeper option / Option Seakeeper	-	-	-	-	-	-	-	-	Type 6
Climatisation sur batteries / Air conditioning on batteries	-	-	-	Type 7 Type 7 Type 7 (qty=3 batteries)	-	-	-	-	-

	Type 2	Type 3	Type 4	Type 6	Type 7
Description	95 AH DUAL AGM (starting + service)	140 AH DUAL AGM (starting + service)	50 AH dry-fit starting battery with low internal resistance (2,2 mOhm)	100 AH AGM starting battery	90 AH Lithium ion (Lithium fer Phosphate)
Voltage (V)	12 V	12 V	12 V	12 V	12 V
Capacity / Capacité (Ah)	95 20 h	140 20 h	50 20 h	100 20 h	90 20 h
Cranking / Intensité au démarrage (A)	850 CEN	750	750	870	
Endurance	360 cycles @ 50%	300 cycles @ 75%	500 cycles @ 75%		> 5000 cycles
Length / Longueur (mm)	353	513	260	330	353
Width / Largeur (mm)	175	189	173	173	175
Height / Hauteur (mm)	190	223	206	240	190
Weight / Poids					13 kg
Terminal position / Position des cosses					
Example / Exemple	Exide Technologie EP800	Exide Technologie EP1200	Exide Technologie EP450	Exide Technologie EM960 (prev. EM1100)	SUPER B Epsilon
Indicative public price / Prix public indicatif (€ ex. VAT)	150 €	350 €	190 €	270 €	1 665 €



M E R R Y F I S H E R 1 2 9 5 F L Y

This is not a contractual document. This document was updated in June 2023.

It may contain illustrations or text representing or referring to optional equipment. If changes appear on the next model year, with regard to equipment or options referred to in this document, only the current Jeanneau rate will apply.



J E A N N E A U